

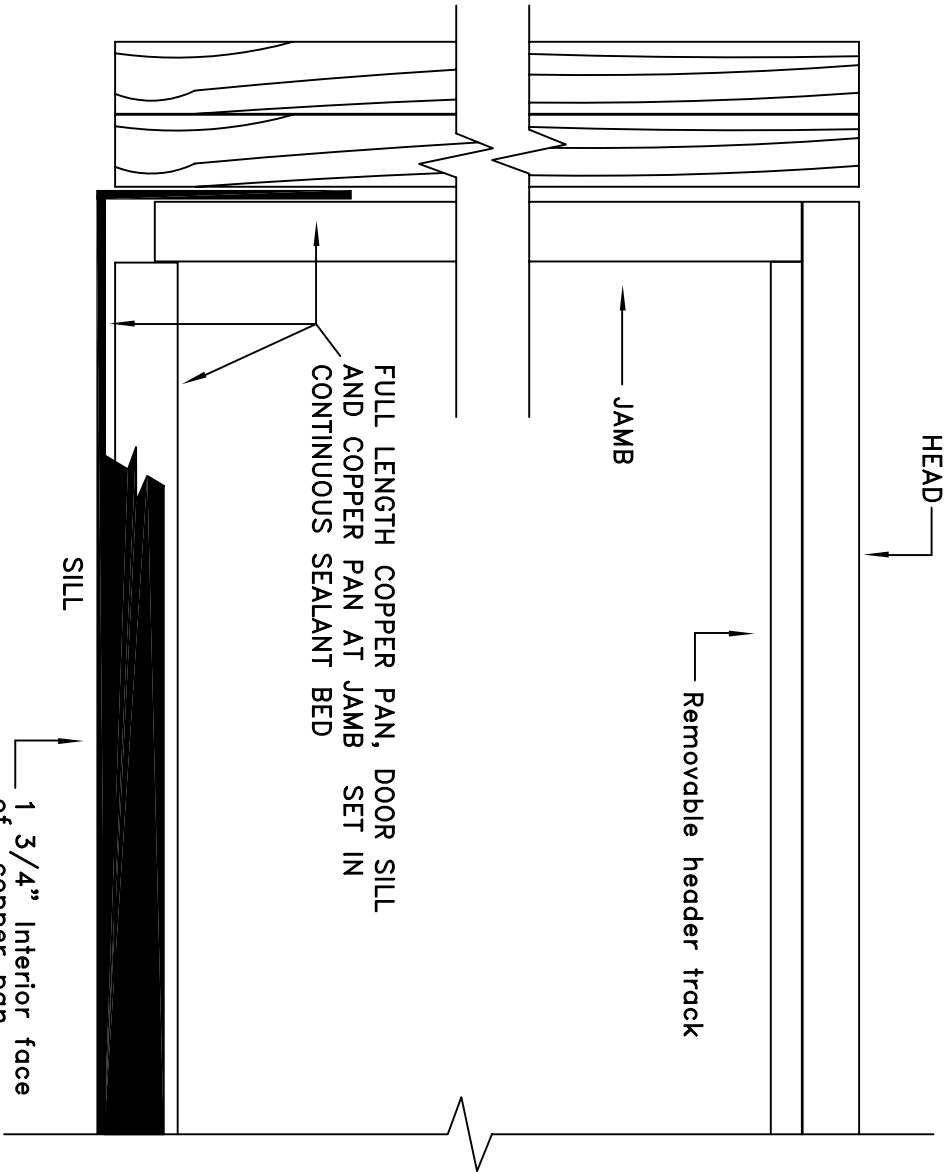
STACKING DOOR FRAME LAYOUT DETAIL

1
3

SCALE: 3" = 1'

ASSEMBLY INSTRUCTIONS

- Head width is net door width.
- Jamb butts under head and is left off of floor approximately 1" for water drainage.
- Sill is installed between jamb.
- Top of head to bottom of sill is net door height.
- Removable header track fits between jamb and must be cut to fit.



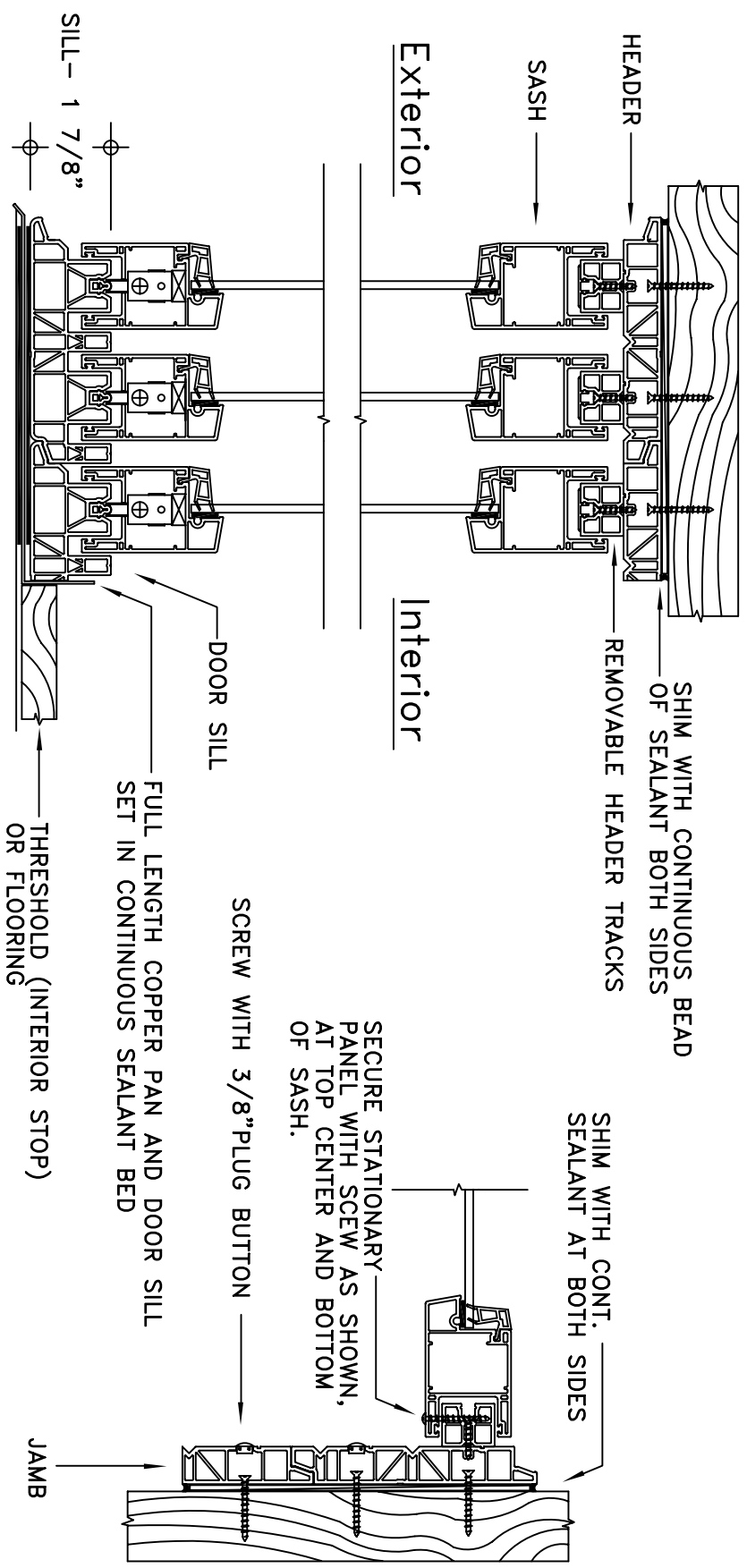
Notes:

- Standard installation include a full length copper pan at sill and up the jambs 6 to 8 inches
- Copper pan supplied by others

| | | |
|------------------------------------|-------------|-------------|
| Company: COASTAL WINDOWS INC | | Project#: |
| Drawing title: StackinInstall1.dwg | | |
| Drawn by: ROBERT BARRETT | Architect: | |
| Date: 12-18-00 | Revision 1: | Revision 2: |

STACKING DOOR INSTALLATION DETAIL – FINISHED

SCALE: 3" = 1'



NOTES:

- Recommended Sealant – Sonolastic 150
- Installation screws every 10 to 16 inches
- No screws through sill, threshold or flooring will act as interior stop. Continuous sealant secures sill.
- Copper Pan supplied by others.
- Door sashes are none lift out, they must be tilted into place.

| | |
|-------------------------------------|-------------|
| Company: COASTAL WINDOWS INC | Project#: |
| Drawing title: StackingInstall3.dwg | Architect: |
| Drawn by: ROBERT BARRETT | Revision 1: |
| Date: 12-18-00 | Revision 2: |

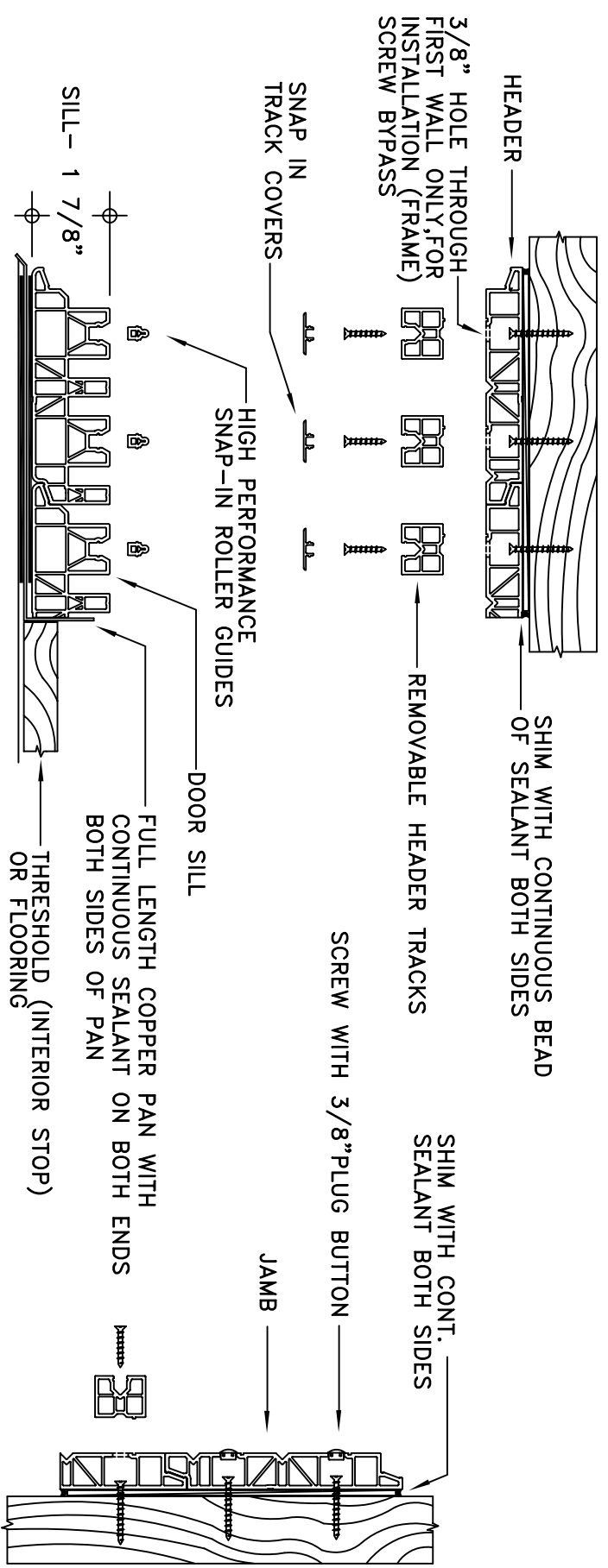
2
3

STACKING DOOR INSTALLATION DETAIL – EXPLODED VIEW

SCALE: 3" = 1'

Exterior

Interior



NOTES:

- Recommended Sealant – Sonolastic 150
- Installation screws every 10 to 16 inches
- No screws through sill, threshold or flooring will act as interior stop. Continuous sealant secures sill.
- Copper Pan supplied by others.
- High performance snap-in roller guides are FLUSH with top of sill when driven in properly. Use rubber mallet.
- Door sashes are non lift out, they must be tilted into place. simultaneously with header tracks.

| | |
|-------------------------------------|-------------|
| Company: COASTAL WINDOWS INC | Project#: |
| Drawing title: StackingInstal12.dwg | |
| Drawn by: ROBERT BARRETT | Architect: |
| Date: 12-18-00 | Revision 1: |
| | Revision 2: |