



INSTALLATION INSTRUCTIONS

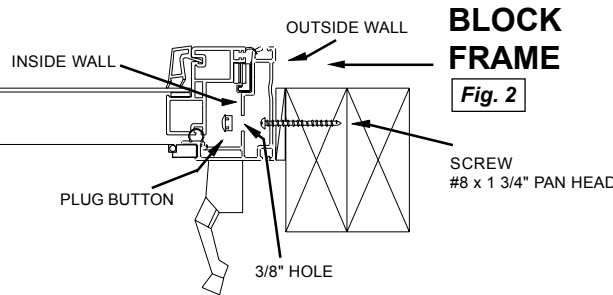
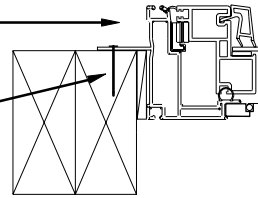
Awning and Casement Windows

For installation, Manufacturer recommends using **PSI-801 Polyether Sealant** or **Sonolastic 150 Sealant** for proper adhesion and weatherproofing of vinyl windows and doors. Available at Coastal Windows.

FLANGE FRAME

Fig. 1

NAIL OR SCREW



BLOCK FRAME

Fig. 2

SCREW #8 x 1 3/4" PAN HEAD

STORAGE: Store windows, doors and components out of contact with the ground, under a weather-tight covering, with no direct sunlight. The storage area must have adequate ventilation. Keep windows and doors upright.

IT IS THE RESPONSIBILITY OF THE OWNER, ARCHITECT OR BUILDER TO SELECT PRODUCTS IN COMPLIANCE WITH APPLICABLE LAWS AND BUILDING CODES. COASTAL WINDOWS, INC. RESERVES THE RIGHT TO CHANGE ITS PRODUCT DESIGNS AND/OR SPECIFICATIONS WITHOUT NOTICE.

INSTALLATION

1. **ROUGH OPENING SHOULD BE 1/4" TO 1/2" LARGER THAN WINDOW.**
2. **THE WINDOW MUST BE INSTALLED LEVEL, PLUMB AND SQUARE TO FUNCTION PROPERLY SINCE THERE ARE NO METHODS OF ADJUSTMENT AFTER INSTALLATION.**
3. Panels may need to be removed prior to installation.

AWNING AND CASEMENT

Flange Frame

1. To set the window, nail or screw corners first. See Figure 1.
2. Nail or screw flange in center of widths and heights being sure window widths and heights are straight (no bows or dips).
3. Check to see if window operates properly before nailing or screwing flange every 3 to 5 inches.
4. Caulk full exterior and interior perimeter.

Block Frame

1. To secure the window in the opening, shim sill level. Be sure window widths and heights are straight (no bows or dips).
2. Use shims to support screws between window frame and opening. Screw full perimeter 3 inches from corners and every 12 to 16 inches thereafter by drilling a 3/8" hole through the inside wall only. The screw goes through the outside wall. See Figure 2. **Do not overtighten.**
3. When window is secured, cover sill screw heads with silicone. Silicone sill plug button holes before capping. The plug buttons supplied will snap into the 3/8" hole. Caulk full exterior and interior perimeter.

Fig. 3

EGRESS FLANGE FRAME

NAIL OR SCREW

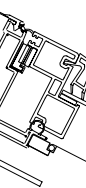
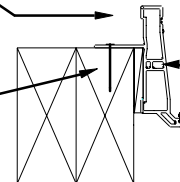
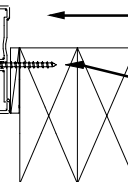


Fig. 4

EGRESS BLOCK FRAME

SCREW #8 x 1 3/4" PAN HEAD



If you have any questions or if something is not clear, please call the factory. We are here to help.

COASTAL WINDOWS, INC. • 94-533 Puahi Street • Waipahu, Hawaii 96797 • PH: (808) 676-0529

Lic. No. BC-18663

rev. 6/99